

ITEM 31. PARKING – DISABILITY PARKING – BRAY STREET ERSKINEVILLE

TRIM RECORD NO: 2016/066868

RECOMMENDATION

It is recommended that the Committee endorse:

- (A) The reallocation of parking on the northern side of Bray Street, Erskineville between the points 26.8 metres and 34.6 metres (one car space) east of Bray Lane as “Disability Parking Only”; and
- (B) The City to investigate the feasibility of installing of a kerb ramp adjacent to the disability space.

VOTING MEMBERS FOR THIS ITEM

| <i>Voting Members</i> | <i>Support</i> | <i>Object</i> |
|---|-----------------------|----------------------|
| City of Sydney | | |
| Roads and Maritime Services | | |
| NSW Police – Newtown LAC | | |
| Representative for the Member for Newtown | | |

DECISION

BACKGROUND

A resident of Bray Street has requested a disability parking space in Bray Street, Erskineville. The resident has advised they are not in a wheelchair but cannot physically walk far.

COMMENTS

Bray Street, Erskineville between Bray Lane and Concord Street is designated for one-way traffic flow with an approximate width of 12 metres. The road and footway grades are relatively flat adjacent to this proposed space.

The kerb space is currently signposted as timed permit parking (2P 8am-10pm Permit Holders Excepted Area 36) on the northern side of the street.

Under existing conditions, vehicles park on both sides of the street which reduces the trafficable lane for one-way traffic flow to an approximate width of 5.3 metres. The remaining width is allocated for on-street parking.

Footpaths (approximately 3.8 metres wide) are provided on both sides of the street.

The Australian Standard for on-street disability parking (AS2890.6-2009) requires the provision of a 3.2 metre wide by 7.8 metre long bay.

A 7.8 metre long bay is proposed and with consideration for the width of existing parking lane in Bray Street, a 3.2 metre wide bay can be accommodated within the carriageway.

The City has undertaken a risk assessment for the proposed disability parking space and the assessment has been sent to Roads and Maritime Services (RMS) for consideration.

CONSULTATION

The City consulted local residents and businesses in the area. There were 118 letters sent out with one response supporting the proposal and no responses opposing the proposal.

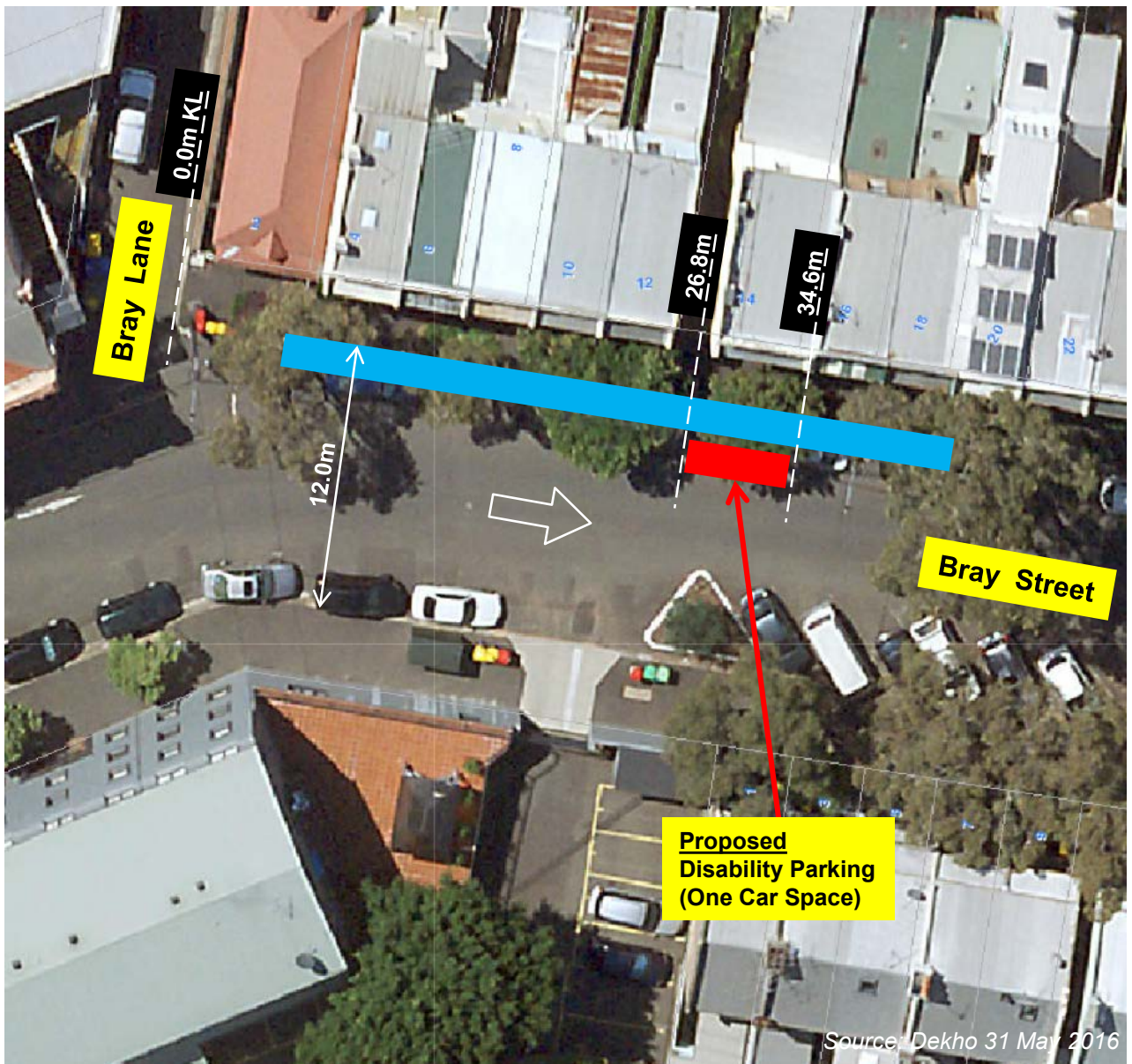
FINANCIAL

Funds are available in the current budget.

ATTACHMENTS

Parking – Disability Parking – Bray Street Erskineville

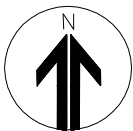
Michael Rimac, Engineering Traffic Officer



LEGEND:

Proposed "Disability Parking Only"

Existing "2P 8am-10pm Permit Holders Excepted Area 36"



PROPOSAL

**BRAY STREET, ERSKINEVILLE
PROPOSED DISABILITY PARKING**



